

JAFtech Mfg.

Energy Efficient Lighting Products

Room Estimator - Building 1 F904-654-63HO-HB-M

Luminaire

IES Filename: F904-654-63HO-HB-M
Description: F904-654-63HO-HB-M

Lumens Per Lamp: 4400 lms
Number of Lamps: 6
Luminaire Lumens: 24757 lms
Luminaire Efficiency: 94 %
Luminaire Watts: 350 W

Total Light Loss Factor (LLF): 1.000

4ft. long High Lumen
Fixture For Use With
6 x 54 Watt T5 Lamps



Room Dimensions

Length (X): 85 ft
Width (Y): 200 ft
Height (Z): 34 ft
Workplane Height: 2.5 ft
Suspension Length: 9 ft
Room Cavity Ratio (RCR): 1.886

Room Reflectance

Ceiling: 0.50
Walls: 0.50
Floor: 0.60
Effective Ceiling Cavity: 0.441
Effective Floor Cavity: 0.577

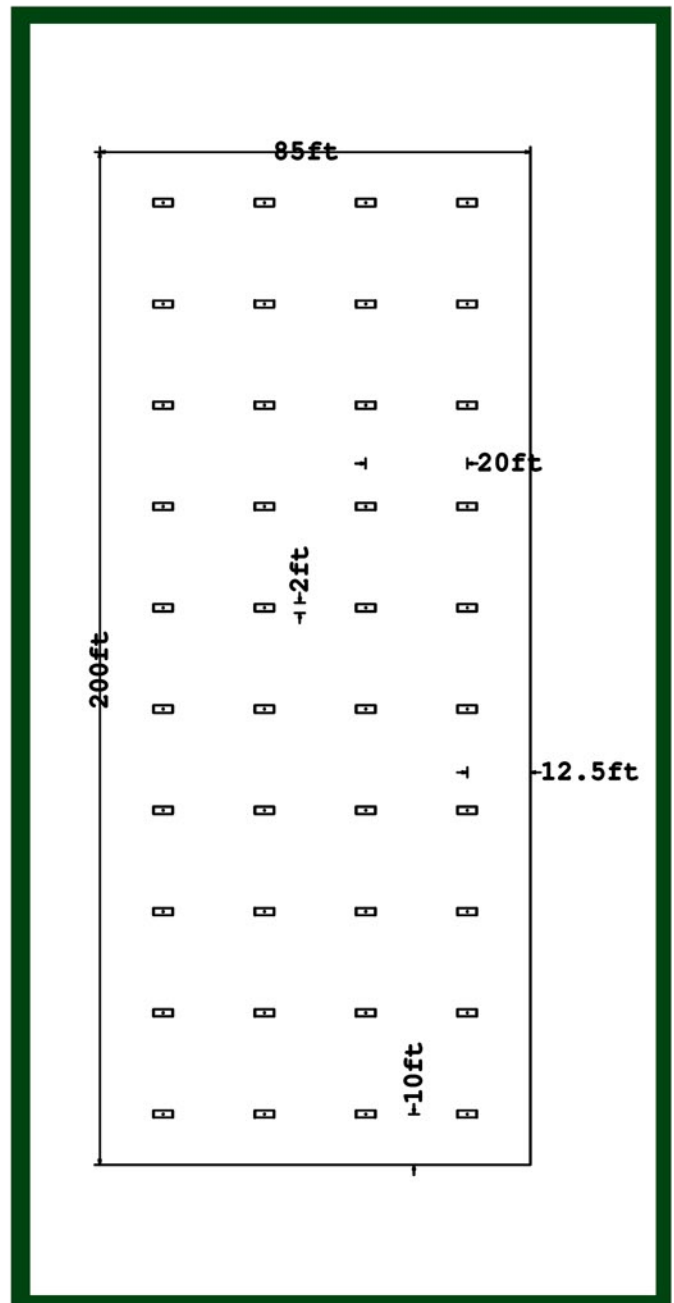
Coefficient of Utilization (CU): 0.867

Results

Estimated Average Illuminance: 54 fc
Number of Luminaires: 40
Lighting Power Density (LPD): 0.824 W/ft²

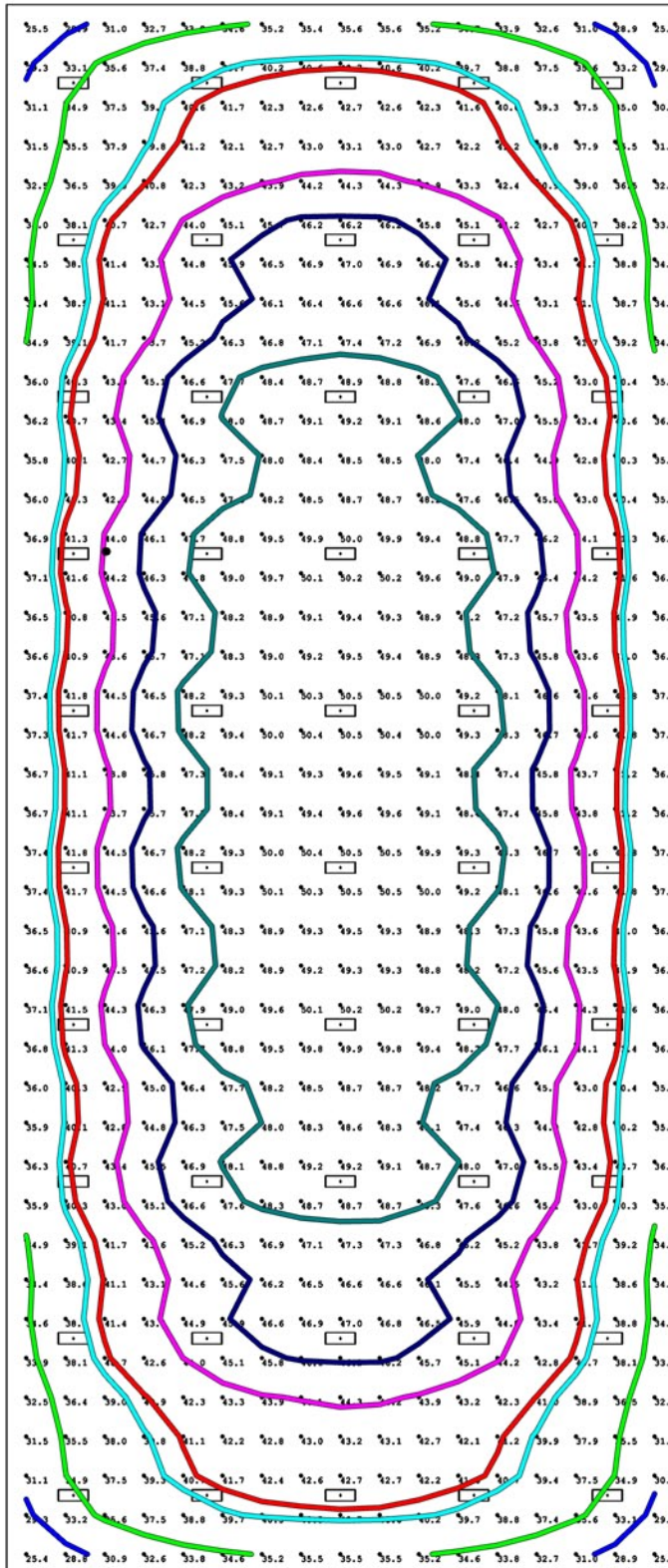
Layout

Layout	Rows (Width, Y)	Columns (Length, X)	luminaires
Grid Layout (Size):	10 ×	4	
Grid Spacing:	20 ×	20	ft
Wall (Start) Spacing:	10 ×	12.5	ft
Ceiling Grid Spacing:	N.A. ×	N.A.	ft
Spacing Criteria:	1.26 ×	0.9	ft



JAFtech Mfg.

Energy Efficient Lighting Products



Building Layout

Illuminance (Fc)
 Average=42.95 Maximum=50.5
 Minimum=25.3 Avg/Min=1.70
 Max/Min=2.00

Value (Fc)	Color	Value (Fc)	Color	Value (Fc)	Color
25	Black	41	Red	48	Cyan
30	Blue	44	Magenta		Brown
35	Green	46	Dark Blue		Purple
40	Cyan		Green		Olive

Expanded View

