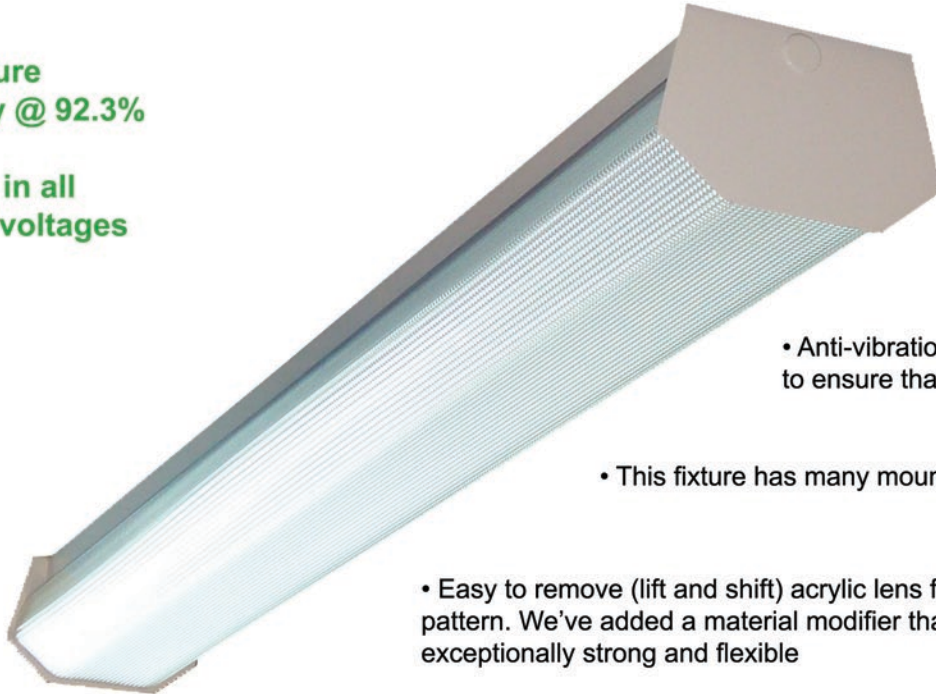




- ★ High Fixture Efficiency @ 92.3%
- ★ Available in all standard voltages
- ★ CSA/UL certified



• Anti-vibration locking sockets to ensure that lamps are secure

• This fixture has many mounting options

• Easy to remove (lift and shift) acrylic lens features a K19 lens pattern. We've added a material modifier that makes it exceptionally strong and flexible



Fixture Description and Applications

The F700 Series efficiency is tough to beat: with a 92.3% efficiency it is an industry leader. This means that 92.3% of light produced by the fixture is distributed to where it is needed.

As well, JAFtech prides itself on being an eco-friendly company. All fixtures are shipped with eco-friendly packaging to minimize waste in landfills and at the jobsite.

We usually recommend this popular fixture for use in institutions, hospitals, schools and commercial facilities.

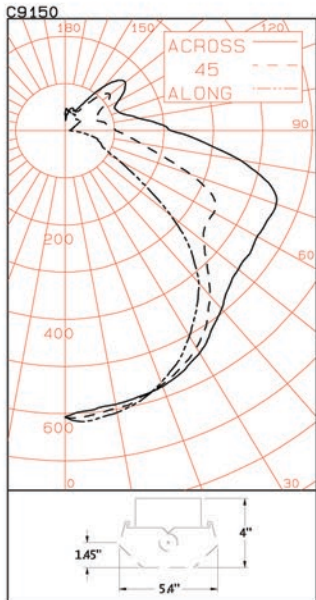
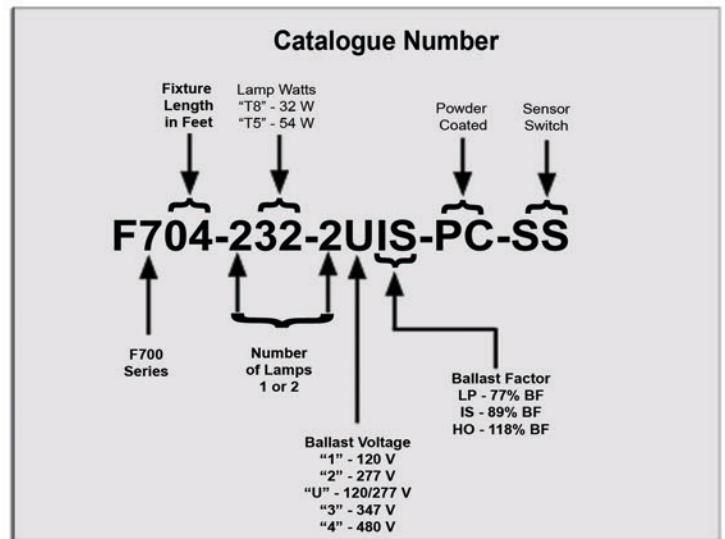
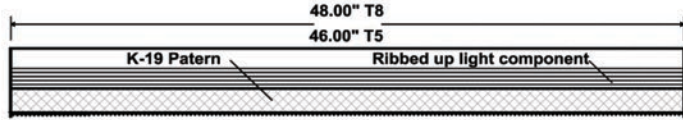
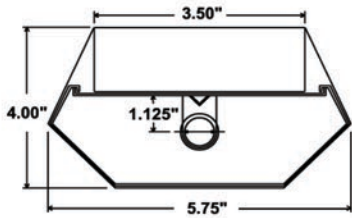
F700 JAFIte Fixture Series

Specification Features

- **Construction** - Light weight welded steel construction. Damage resistant acrylic lens with 19% up-light component
- **Reflectors** - High reflectance white
- **Ballast Information** - All standard ballast factor options. Fixture comes with ballast disconnect where required by CSA/UL.
- **Mounting** - Ideal for walls, ceilings, row or pendant mounting
- **Certification** - CSA/UL certified.

Fixture Options

- **Available in:**
 - 1 lamp configuration - From 2 feet to 16 linear feet
 - 2 lamp configuration - From 2 feet to 8 linear feet
- **Available in custom colors** (see JAFtech color chart)
- **Occupancy and/or daylight harvesting sensors**
- **Integral emergency lighting**
- **White powder coated wire guards**



LIGHTING SCIENCES CANADA LTD.

440 Phillip St., Unit 19, Waterloo, Ontario, Canada N2L 5R9
 Tel: (519) 746-3140 Fax: (519) 746-3156 lsc@lightingsciences.ca

CERTIFIED TEST REPORT NO. LSC9150
 COMPUTED BY LSC PROGRAM **TEST-LITE**

JAFTECH 4' WRAPAROUND FLUORESCENT FIXTURE CAT. NO. F704-132-11IS-PC
 WITH WHITE PAINTED REFLECTOR AND PRISMATIC WRAP LENS
 ONE OSRAM FO32/741 32W T8 FLUORESCENT LAMPS. LUMEN RATING = 2800 LMS.
 OSRAM 120V 1-LAMP ELECTRONIC BALLAST NO. QT1x32/120 IS-SC

Fixture Efficiency 92.3%

** EFFICIENCY = 92.3% **

LUMINANCE SUMMARY-CD. / SQ. M.

ANGLE	ALONG	45	ACROSS
45	3655	3039	3163
55	2359	2882	3309
65	1445	3168	3670
75	1865	2365	4074
85	2090	2003	3390

PAINT REFLECTANCE = .93 S/MH = 1.3
 SC (ALONG) = 1.2, SC (ACROSS) = 1.3

CERTIFIED BY: *Charles Sison* DATE: APR 22, 2002
 PREPARED FOR: JAFTECH MFG. LTD. NEWMARKET, ONTARIO

TESTED ACCORDING TO IES PROCEDURES. TEST DISTANCE EXCEEDS FIVE TIMES THE GREATEST LUMINOUS OPENING OF LUMINAIRE.

CANDLEPOWER SUMMARY

ANGLE	ALONG	22.5	45	67.5	ACROSS	OUTPUT LUMENS
0	608	608	608	608	608	
5	617	607	606	601	595	58
15	592	585	586	588	583	165
25	541	537	554	565	564	254
35	463	473	500	513	516	308
45	360	361	406	453	469	315
55	189	243	348	433	456	302
65	85	135	330	442	451	290
75	67	78	200	380	426	237
85	25	54	124	227	281	155
90	11	42	103	173	214	
95	9	43	95	157	186	107
105	16	36	75	122	129	82
115	20	37	68	109	111	71
125	39	66	104	139	146	88
135	34	62	108	141	151	77
145	37	41	57	76	85	38
155	39	43	47	49	47	21
165	40	39	35	45	49	12
175	46	45	34	27	33	4
180	37	37	37	37	37	

ZONE	LUMENS	% LAMP	% LUMINAIRE
0-30	477	17.06	18.48
0-40	785	28.05	30.39
0-60	1403	50.11	54.28
0-90	2085	74.47	80.67
40-90	1299	46.42	50.28
60-90	682	24.36	26.39
90-180	499	17.85	19.33
0-180	2584	92.32	100.00

CANADA:

250 Harry Walker Parkway North, Units 1 & 2,
 Newmarket, Ontario, L3Y 7B4, CANADA
 Telephone: (905) 836-9311

www.jaftech.com

Toll Free Number:

1-888-JAFtech (523- 8324)

Fax: (905) 836-2870

UNITED STATES:

6399 142 Ave North, Suite 118,
 Clearwater, Florida, 33760, UNITED STATES
 Telephone: (727) 408-5294